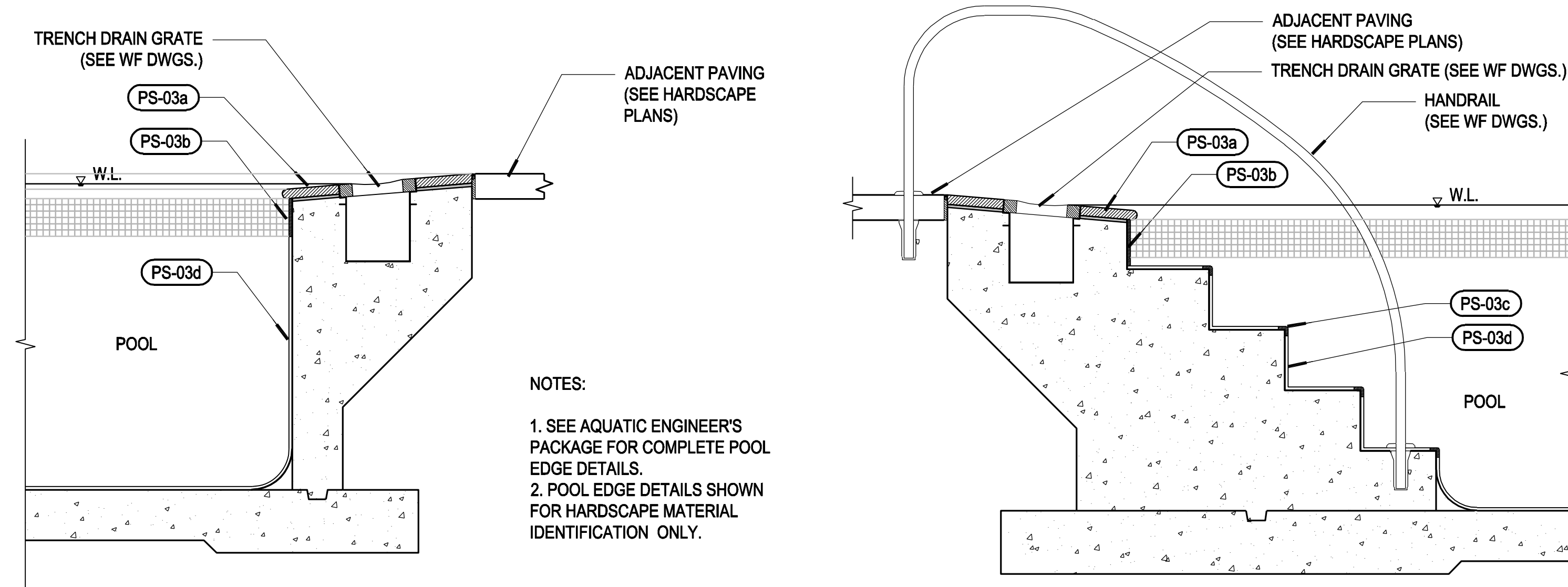


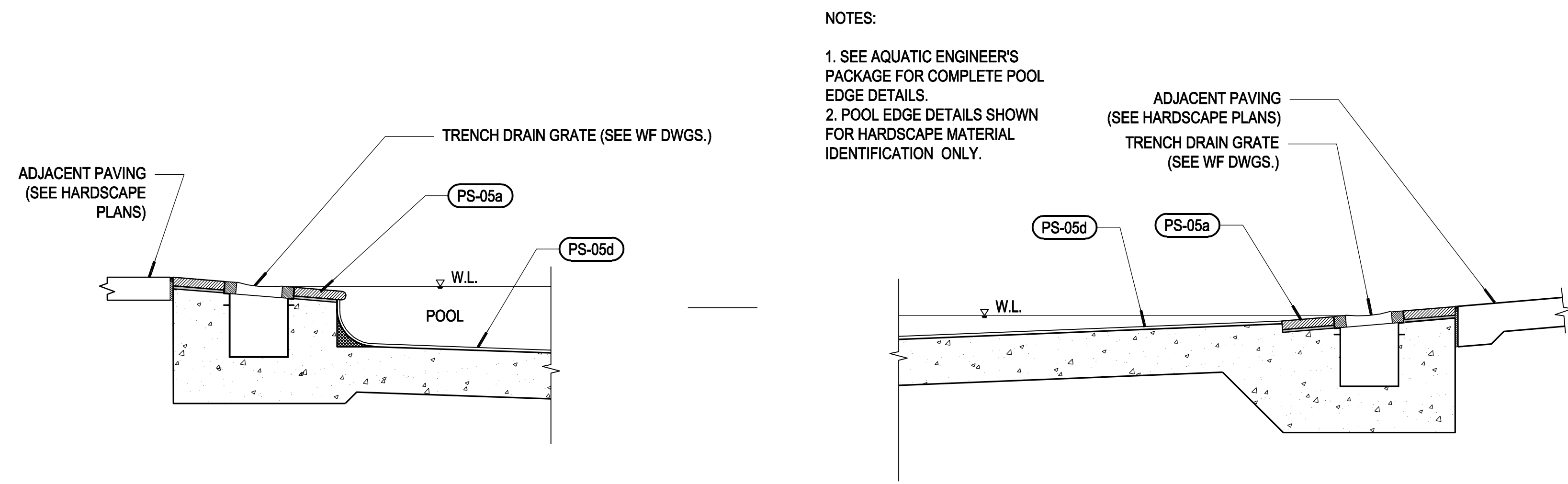
NOTES:
1. SEE AQUATIC ENGINEER'S PACKAGE FOR COMPLETE POOL EDGE DETAILS.
2. POOL EDGE DETAILS SHOWN FOR HARDSCAPE MATERIAL IDENTIFICATION ONLY.

1 PS-01 SPA POOL EDGES
DWG DESCRIPTION
DETAIL/XREF NAME.dwg
SCALE -3/4" = 1'-0"



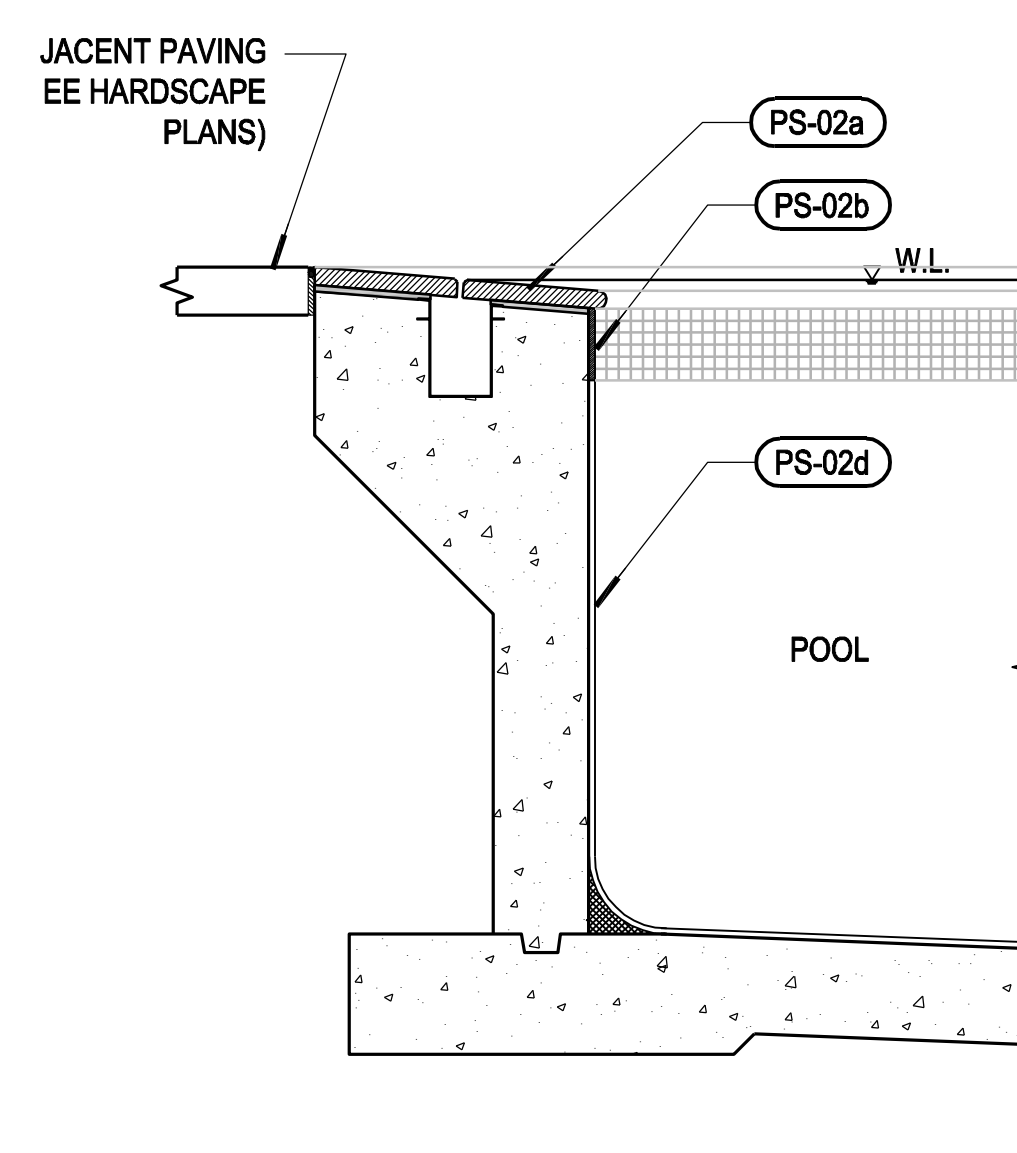
NOTES:
1. SEE AQUATIC ENGINEER'S PACKAGE FOR COMPLETE POOL EDGE DETAILS.
2. POOL EDGE DETAILS SHOWN FOR HARDSCAPE MATERIAL IDENTIFICATION ONLY.

3 PS-03 LAP POOL EDGES
DWG DESCRIPTION
DETAIL/XREF NAME.dwg
SCALE -3/4" = 1'-0"



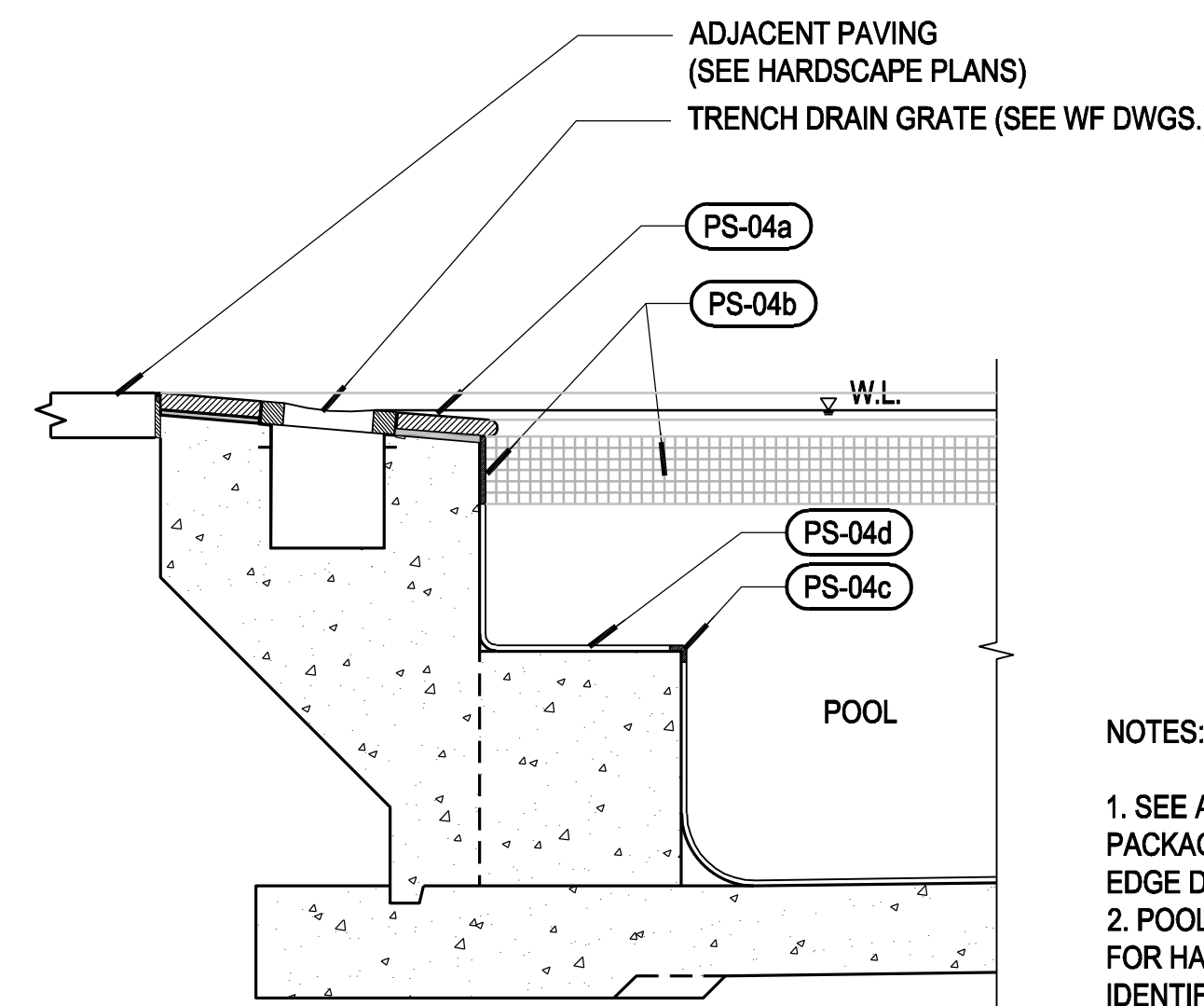
NOTES:
1. SEE AQUATIC ENGINEER'S PACKAGE FOR COMPLETE POOL EDGE DETAILS.
2. POOL EDGE DETAILS SHOWN FOR HARDSCAPE MATERIAL IDENTIFICATION ONLY.

5 PS-05 KID POOL EDGES
DWG DESCRIPTION
DETAIL/XREF NAME.dwg
SCALE -3/4" = 1'-0"



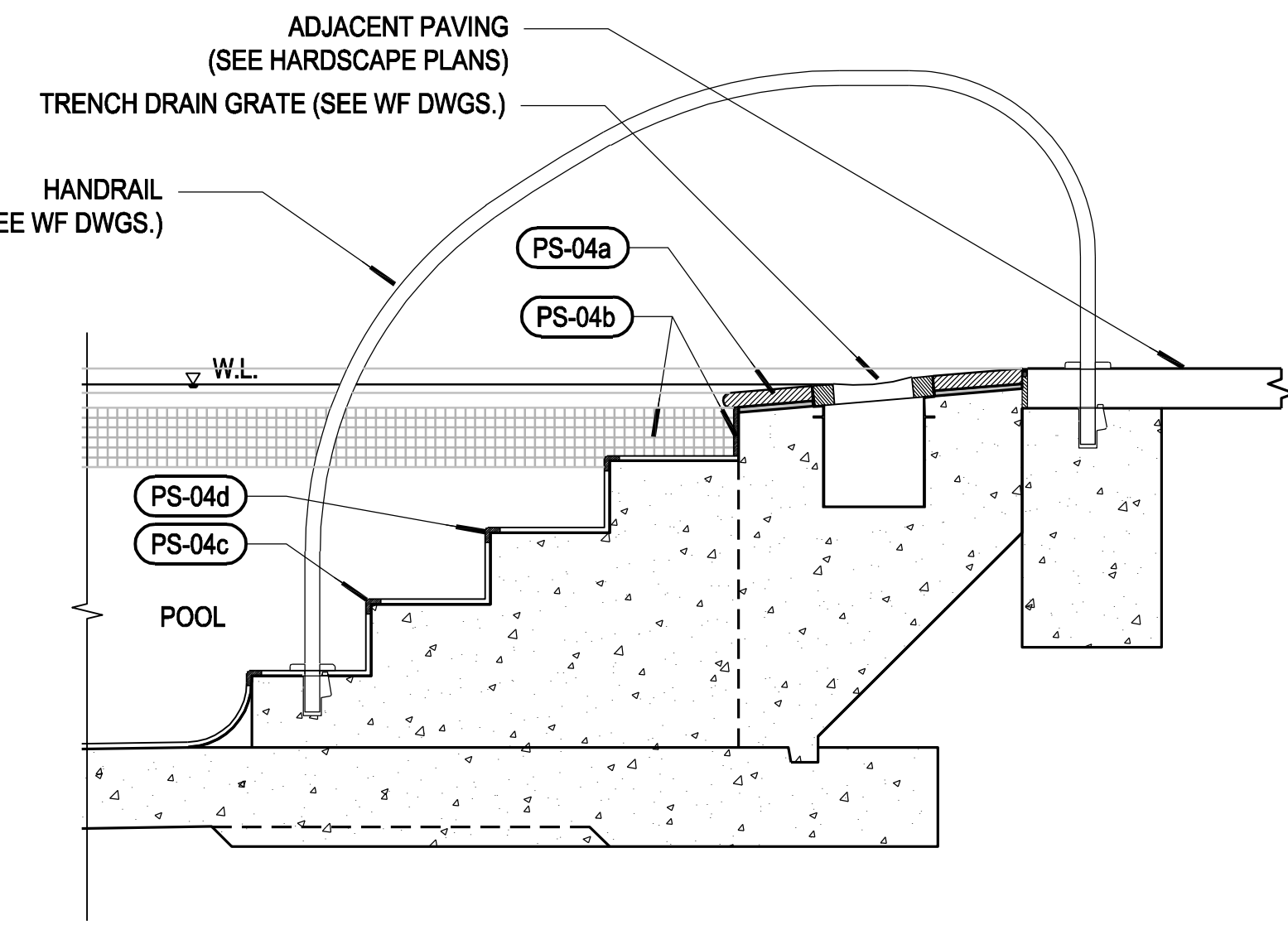
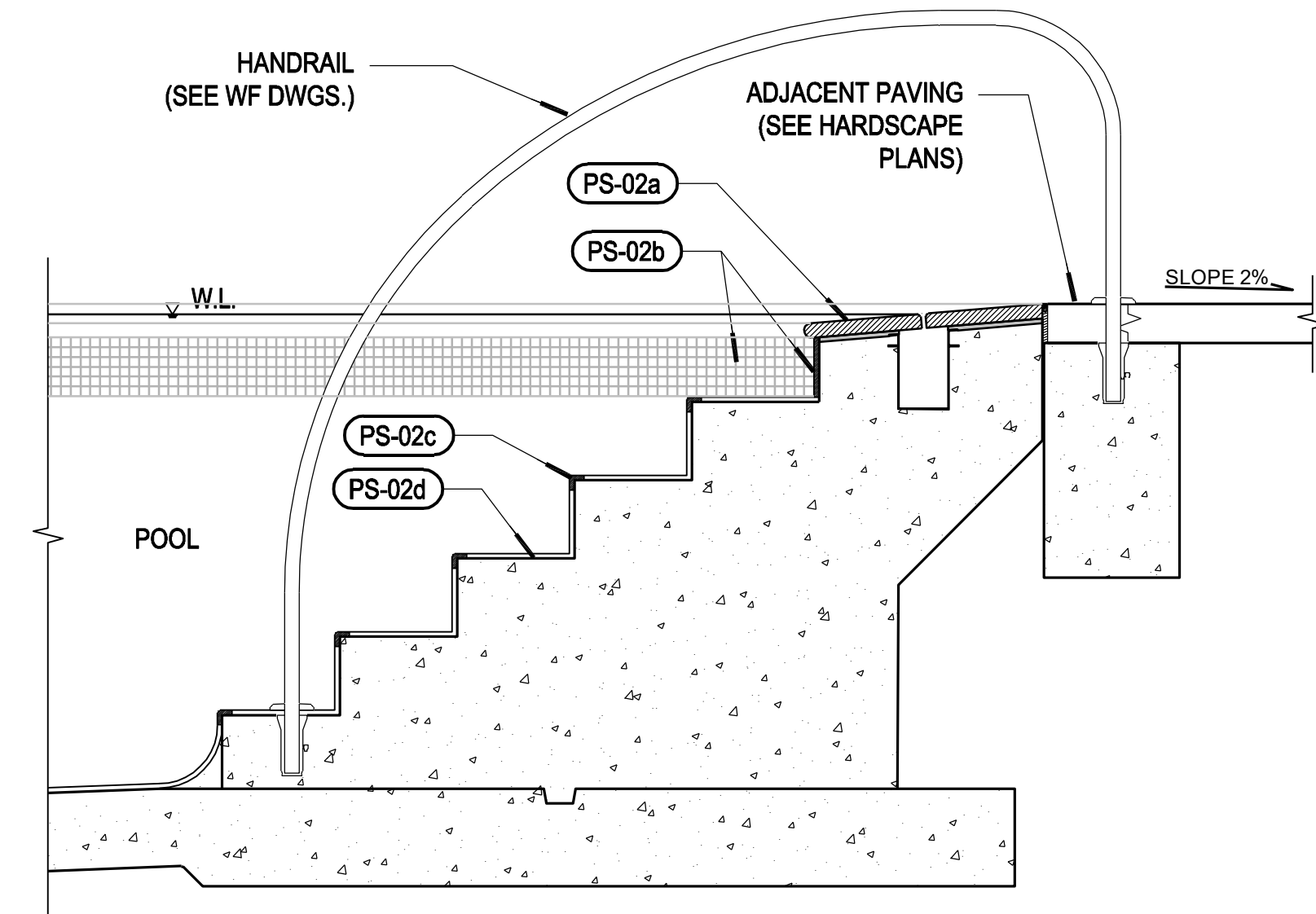
NOTES:
1. SEE AQUATIC ENGINEER'S PACKAGE FOR COMPLETE POOL EDGE DETAILS.
2. POOL EDGE DETAILS SHOWN FOR HARDSCAPE MATERIAL IDENTIFICATION ONLY.

2 PS-02 ADULT POOL EDGES
DWG DESCRIPTION
DETAIL/XREF NAME.dwg
SCALE -3/4" = 1'-0"



NOTES:
1. SEE AQUATIC ENGINEER'S PACKAGE FOR COMPLETE POOL EDGE DETAILS.
2. POOL EDGE DETAILS SHOWN FOR HARDSCAPE MATERIAL IDENTIFICATION ONLY.

4 PS-04 FAMILY POOL EDGES
DWG DESCRIPTION
DETAIL/XREF NAME.dwg
SCALE -3/4" = 1'-0"



To the best of the architect's or engineer's knowledge, the plans and specifications comply with the applicable minimum building codes and specifications in effect at the time of preparation of these documents and in accordance with this section and Chapter 633, Florida Statutes.

REVISED

S&L

© Garcia Stromberg

GARCIASTROMBERG
CS4studios

CLIENT - OWNER
BOCA WEST COUNTRY CLUB
Mr. Matthew Linderman

PROJECT INFORMATION
BOCA WEST COUNTRY CLUB
POOL AREA AND PORTE COCHERE

HARDSCAPE DETAILS
L3-4-05

PROJECT #
SHEET #

100% DESIGN
DEVELOPMENT -
ISSUED FOR BID
ISSUE DATE: JANUARY 15, 2011

1515 E. BROWARD BOULEVARD, SUITE 110
FORT LAUDERDALE, FLORIDA 33304
www.edsa.com
EDSA
PLANNING LANDSCAPE ARCHITECTURE - SINCE 1974